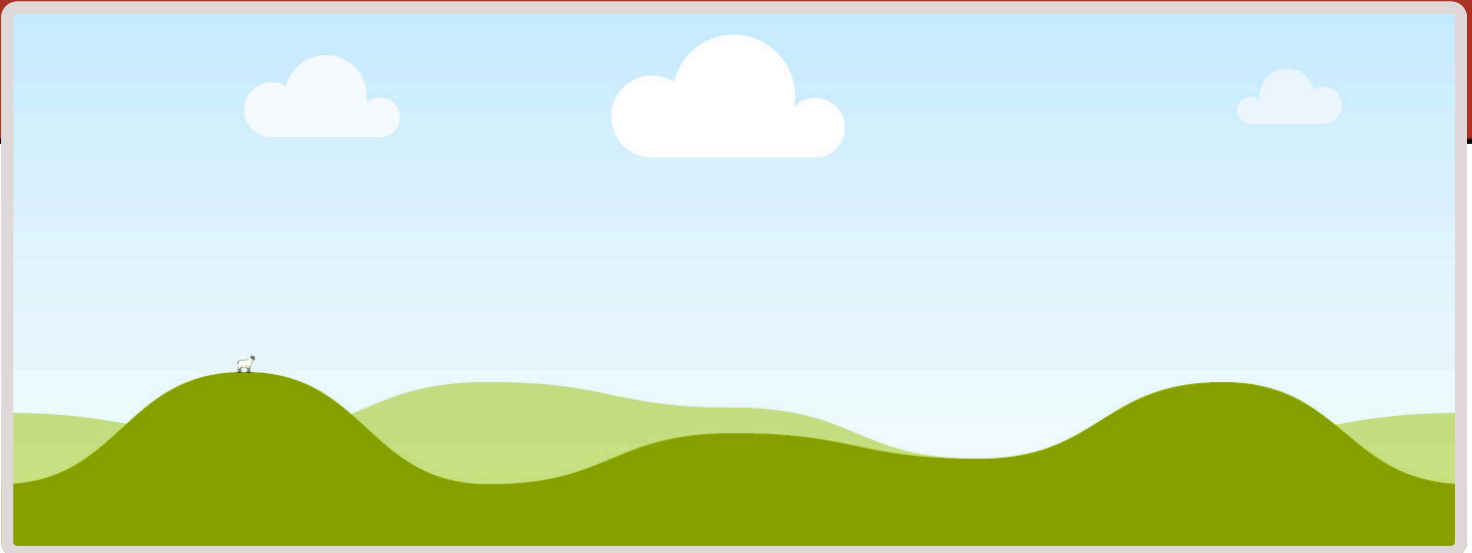


Bridport St Mary's CE Primary School



Welcome to our school

.....

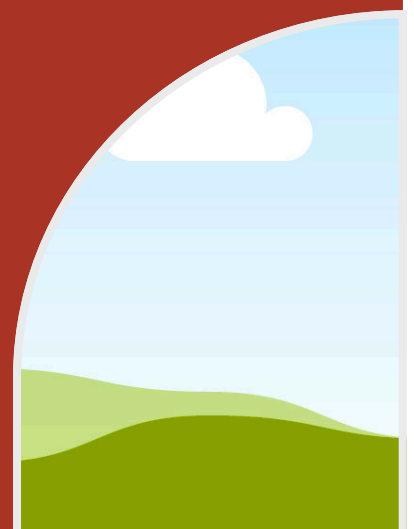
Our vision at St Mary's is to 'build a caring community where all can learn and shine!' You can read more about what this means in our [Visions and Values](#) section on our website. We are very blessed at our school to have a highly experienced and dedicated team of staff who care deeply about nurturing and encouraging children to achieve their very best. Together, we aim to work in partnership with parents, to ensure all the children in our care achieve their full potential.

Children are individuals with many different talents and abilities.

We provide them with a broad curriculum with many varied and exciting opportunities to learn in different ways and to achieve their best. We want children to be proud of, and enthusiastic about, being part of our school.

Choosing a school can be a very difficult decision and we hope this guide provides a helpful insight into life at St Mary's.

Katharine Anstey
Headteacher



Our Vision

.....
'BUILDING A CARING COMMUNITY,
WHERE ALL CAN LEARN AND SHINE!'

As a church school we are inspired by Jesus teaching to:
'Love God and Love Others as Ourselves'
Matthew 12 vs 30-31

We provide education within the context of Christian belief and practice. We encourage, through support and challenge, an understanding of the meaning and significance of faith and spirituality. We believe in enabling young people to develop tolerance and respect through a wide understanding of all faiths and beliefs.

Our school Values are illustrated on these amazing canvas posters with the pupil's ideas about how to show the values in school life.



Our Staff

| | | |
|---------------------------------------|--|---|
| HEADTEACHER | Katharine Anstey | |
| DEPUTY HEADTEACHER | Sarah-Jayne Samuel | |
| Inclusion Lead/SENCO | Kate Barnett | |
| Reception Teacher | Sarah Geldard | |
| Year 1 Teacher | Harriet Haynes – Rebekah Leese Maternity leave | |
| Year 2 Teacher | Gemma Harrison | |
| Year 3 Teacher | Katie Smith | |
| Year 4 Teacher | David Byrne | |
| Year 5 Teachers | Ed Morrison | |
| Year 6 Teacher | Laura Smith | |
| Inclusion Hub teacher | Sebastian Gawen | |
| Teaching Assistants (including HLTAs) | Vanessa Jessopp Lucy Gerrard Sherri Ireland Kimberley Ebdon Emma Goff Daniel Entwistle Faye Tuck Charlianne Dumper Mollie-Mae Kavanagh Spencer Curtis Charley Dumper | Gina Randall Emma Boyd Jay Collins Morgan Dearnley Holly Barwick Alison Smith Helen Farmer Sam Kearley Cassidy Sorrell Kirstin Gurmin Sarah March |
| School Office Staff | Ms Sian Viner, Mrs Paulina Brown | |
| School Kitchen Staff | Mrs Angela Willcox | |
| Breakfast Club/ After School Staff | Mrs Tuck, Ms Barwick, Mrs Dearnley, Mrs Boyd, Mrs Smith | |

Local School Committee

| Position | Name of Governor |
|------------------------|------------------|
| Clerk to the committee | TBC |
| Chair of Committee | Sally Walton |
| Headteacher | Katharine Anstey |
| Foundation Governor | John Rees |
| Community Governor | Christine Riley |
| Community Governor | Janet Clayton |
| Parent Governor | Louise March |
| Parent Governor | Vacancy |



Early Years

Our Reception class has a spacious classroom, play area and we have skilled staff who will give your children the best possible start to their school life at St. Mary's. Mrs Geldard, the class teacher, visits the children in their pre-schools in the term before they join us and we invite you and your child to a Teddy Bears Picnic followed by two play sessions for your child in July so that they become familiar with the staff and classroom. We also provide an information evening for parents and a home visit before they start in September. This supports a smooth transition and we find that the children settle in quickly during the Autumn Term.

Early Years Curriculum

In their EYFS year pupils follow the EYFS Framework which supports your child's learning and healthy development. Children mostly develop the 3 prime areas first.

These are:

Communication and language;

Physical development,

Personal, social and emotional development.

As children grow, the prime areas help them to develop skills in 4 specific areas. These are: Literacy; Mathematics; Understanding the world, and Expressive arts and design.

Find out more in our Early Years section of the school website.



School Readiness

There are lots of helpful things you can start before your child comes to school...

Enjoy reading books together and make the most of opportunities to bring counting into everyday activities. You can find ideas for this in the EYFS section of our website.

At school, children will be encouraged to be independent learners. It would be helpful if you were to buy items of clothing that are easy for the children to take on and off themselves.

Remember to purchase shoes with velcro rather than lace up shoes, so children can easily remove and replace their own footwear. It would also be helpful if you could encourage your child to put on and take off their own coat, before hanging it up, as well as using a tissue to wipe their own nose.

Please remember to clearly label all of your child's belongings with their full name.

It is not advisable to bring in toys from home as they can inevitably become lost.

We have lots and lots of toys for the children to play with so please keep your toys from home, at home!



Our School Curriculum

The curriculum at St Mary's Primary School is designed to provide a broad and balanced education that meets the needs of all pupils and gives them the skills, knowledge and understanding to prepare them for their future lives. We are focussed on the development of the whole child and promote a positive 'can do' attitude to learning, where staff encourage aspiration and challenge. We actively seek to engage with relevant educational research and use this to refine and develop our curriculum over time. For more information see our Curriculum Section on the school website.



Trips and Visits

Children will attend a wide variety of trips and visits during their time at St Mary's. These are linked to their topics and designed to enrich and inspire their learning with hands on experiences. We also take part in experiences/visits both off site and at school to support pupils wider personal development.



Celebrating Learning

We love to encourage pupils in their learning. Each class uses the 'Class Dojo' app as a way to reward effort and achievement. Children are also encouraged to share home learning. They may be asked to come and show a senior leader and a photo of their work is taken with an email home to say well done. Certificates are also awarded in our weekly celebration assembly for good work, thoughtful actions or for contributing positively to the school community.



English



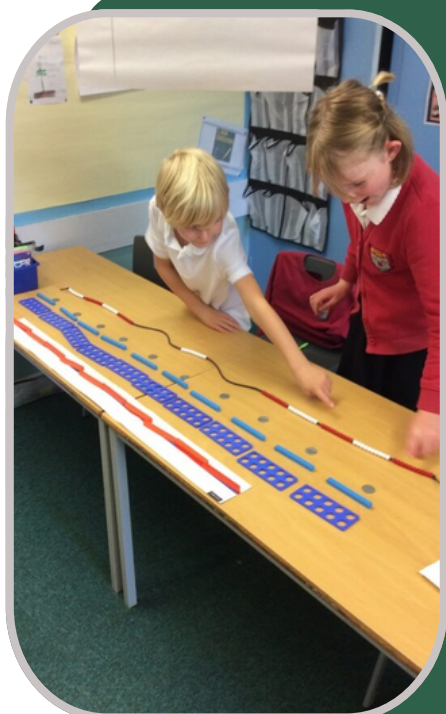
We build strong foundations for reading right from the beginning of Reception. Through the Read, Write Inc. phonics programme we learn the basic letter sounds so that the children can read words and stories with fluency and accuracy.

Using Kinetic Letters, we build up the strength and fine motor skills to support writing, along with the correct pencil grip and letter formation to establish the basic skills needed for writing.

The inspiration for the children's writing and reading in Reception stems from the picture books and stories which they share in class story time. These stories are then explored through 'adventure time,' where children have the opportunity to explore stories through play, and 'drawing club' where the children can draw their responses and ideas about the stories they read.

Numeracy

At St Mary's, we recognise that a whole-school systematic approach to delivering quality maths is fundamental to our success. Through adopting a mastery curriculum, alongside the aims of the National Curriculum, children progressively build an understanding of key concepts. We work closely with the NCETM and our local maths hub to implement a clearly sequenced, stepped curriculum which allows each child to build on secure foundations, remember more and explore maths in a creative and engaging way. We ensure each year we build on the previous year's learning and consider the individual journey of each child to ensure they are ready for their next steps.



Science

At St Mary's, children have the chance to become scientists from the beginning of Reception. We explore science through practical investigations such as designing the best protective support for Humpty Dumpty's shell when he falls from the wall.

We discuss how to make fair tests and the children share their predictions about what might happen. We observe how things change over time- such as caterpillars turning into butterflies.

We aim to inspire all children to develop a love of the STEM subjects (science, technology engineering and mathematics).



Religious Education

We provide education within the context of Christian belief and practice. At our last inspection we were graded as 'Excellent'. We encourage an understanding of the meaning and significance of faith and promote Christian values. We teach understanding, tolerance and respect through a wide understanding of all faiths and beliefs. We have daily collective worship either as a whole school, led by Senior Staff or local clergy or in classes, led by teachers. Our 'STAR' club group are also involved in planning and leading worship. Parents can choose to withdraw their children from all or part of worship following discussion with the Headteacher.



Foundation Subjects

Our curriculum is based on a creative and thematic approach to learning that is mapped to the Primary National Curriculum to ensure comprehensive coverage of national expectations. This curriculum is delivered through Imaginative Learning Projects which provide a rich menu of exciting and motivating learning activities that make creative links between all aspects of our children's learning.

Within each topic the children progress through four stages of learning – Engage, Develop, Innovate and Express. Each class chooses a relevant way to express their learning to their parents and termly curriculum newsletters provide information about these express events.



Physical Education

At St Mary's we enjoy being physically active. We believe that creating an environment that develops, confidence, skills and knowledge in a safe, supporting and nurturing environment leads towards everyone living active lives and having healthy minds.

Our curriculum aims to support children in engaging with a wide variety of activity and knowing why being active is important.

We encourage children to ride their bicycles and scooters to school and our Year 5/6 pupils are given the opportunity to attend cycle training sessions – Bikeability, each year. Any child riding their bike to school should wear a helmet and then lock their bicycle up in the school grounds. Children younger than Years 5 and 6 should be accompanied by an adult if they wish to ride their bike to school. Please ensure all bikes and scooters are walked on to the school premises.



Home-School Liaison

Each term, class teacher's will send out a curriculum leaflet with information on what will be taught (this will also be available to view on the school website).

Parent meetings are held in the autumn and spring terms, where a termly progress report is shared. An end of year report is sent home in the summer term.








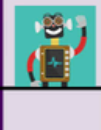

Regular newsletters and lists of dates of events are emailed home.

Behaviour for Learning

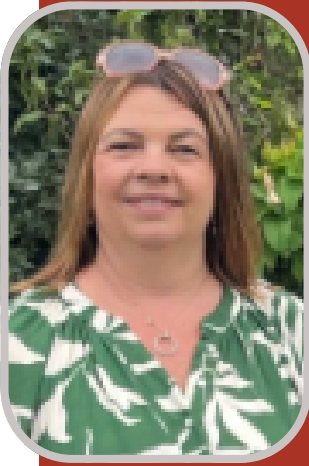
We have three rules at St. Mary's Primary School

Be ready, Be respectful and Be safe

We ensure that the children are confident with the rules and are familiar with our behaviour charter so that children know the rules in all situations within school. You can find out further information on the policies section of our website.

| St. Mary's Behaviour Charter | | | | | |
|--|---|---|---|---|--|
| | Always... | Classroom and Shared areas | Outside area | Hall | Bathrooms |
|  Ready  |  Wear school uniform with pride Bring in our book bag and our PE kits. Be ready to listen actively to all Put lunch boxes on trolley Coats and PE kits on peg |  Agree support that helps you learn and have specific resources with you when needed Be ready with pencil, pen etc. In KS2, your reading book should be on your desk. Accept mistakes help your brain to grow- be ready to correct and edit No way through isn't true |  Remember lunch time jobs/ clubs and be where you are expected to be Wear a coat when needed Play in the right areas Place equipment away when asked. |  Sit sensibly with someone you can enjoy lunch with Have your bottle and lunch box with you Sit sensibly next to someone you can listen with Walk in and wait or sing Be ready for moment of stillness and calmness |  Visit bathrooms at the right time Only 1 in the cubicle at a time Wash your hands before you eat. |
| Respect-ful  | Listen and follow instructions from any adult Be helpful where you can Share whenever you can Celebrate successes Listen and speak politely to all Treat others fairly -too much selfie isn't healthy! Celebrate diversity | Talk and listen with kindness to teachers, TAs, volunteers, visitors and each other Value, encourage and praise other children Be Tidy-respect equipment and resources Respect everyone's uniqueness and individuality Be aware of your noise level- too much noise makes it hard to learn | Talk and listen to all lunch staff, teachers and TAs with respect Be kind and tolerant of everyone on the playground Treat your friends with respect- banter and jokes can be hurtful Upstand respectfully if you need to Respect nature | Listen to the adults and follow their requests Talk quietly in the hall -it can be loud. Show kindness and respect to each other- don't forget to let love in! Respect moments of silence and discussion Listen to others and join in | Keep the bathroom area tidy Take turns using the cubicle Value privacy Take only yourself to the toilets Use one or two paper towels, scrunch up small and put into bin |
| Safe  | Use equipment safety Walk when moving around the school and through the courtyard Keep feet on the ground unless on a climbing frame or during PE Talk to a trusted adult if you feel unsafe | Use all equipment in the safest way Follow the routines for entering and exiting the classroom Tuck in your chairs Keep the classroom tidy and clutter free Throwing is for outside and for PE lessons | Use the equipment in the way you have been shown. Follow the rules around specific areas- monkey bars/treehouse/woodland Sticks should be used safely- elbow to wrist size Be safe in the seasons-use ice, leaves, puddles and grass cuttings safely | Walk to the hall and around the hall If you do not want an item of food, please put into the bin. Sticks should be used safely Sit, listen and reflect safely | Let an adult know if something is wrong or needs replacing Be aware of wet floors Walk Use the taps to wash your hands and then go back to class. |

Support for Families



Our, Early Years team and Year 1,2 and 3 staff welcome children on the gates each morning and our senior leadership team are available to take messages for the all classes. In the afternoon teachers bring their classes out at pick up time and are available to speak to then. We also have a dedicated family support email familysupport@stmarybridport.dorset.sch.uk which is checked by our Family Liaison staff member, Lucy Gerrard. She can pass messages on to teachers but also has a wealth of knowledge in supporting families whether this is a concern about your child's wellbeing or family circumstances that are challenging such as financial issues, please do get in touch.

Special Educational Needs and Disabilities



At St. Mary's School we want every child to fulfil their potential. For some children this may mean access to resources or expertise beyond that provided in the classroom. We aim to identify any additional needs as early as we can so that we can provide the right support for your child to flourish at school. The school aims to use interventions that have a research base and that are proven to be effective in helping children to make accelerated progress. Our aim is that all children make good progress from their starting points and where possible, that this support should help them 'catch up' so that they can work confidently at age related expectations for their year group. We also take advice from a range of professional agencies, such as health services, Specialist teachers (who can assess individual learning needs), Educational Psychologists and the Hearing and Vision Support Service, to provide tailored 1:1 programs of support where required. We review children's progress regularly and are proud that our support often leads to accelerated progress, enabling children to become increasingly independent and confident learners.

Children with physical needs receive help with dressing/undressing for PE and swimming, as well as with mobility around the school. Our school buildings are all on one level and are very wheelchair friendly. We also have a disabled toilet for pupils, staff and visitors in the school. Children with disabilities are admitted in accordance with the Disability Equality Act. This and our Accessibility Plan are available to read in school and on our website.



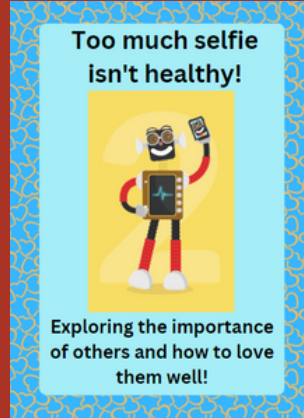
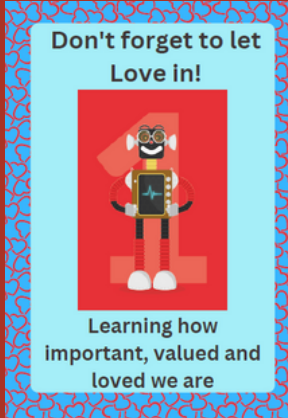
Our on site edible garden provides an amazing resource for supporting sensory needs as well as our Hub and Den provisions which offer support to pupils throughout the day.

The school's local offer and policy for SEND is approved and reviewed by the local school committee and is also available to view at the school office and on the website.



Personal Development

Our RSHE curriculum includes a resource called Heartsmart. All lessons are linked to the national curriculum and based around the scheme which uses Boris the robot to help children reflect on 5 key themes, one per half term. You can find more on our curriculum pages [here](#).



Responsibilities in School

Each class selects two JLT (junior leadership team) representatives who meet once every half term to feedback and discuss their year group's concerns and ideas. The team are consulted on many matters and encouraged to contribute their views on whole school development priorities. All children are encouraged to share ideas or concerns with their JLT representative, so that any issues can be considered and where possible, appropriate action taken.

Other roles include our Wellbeing Ambassadors, Eco Club, Choir, STEM club and STAR club.



In 2024 our JLT were given the task of choosing books from the local bookshop to fill our new library.



Our Wellbeing ambassadors helped us gain a Gold Award from the Antibullying alliance. Part of the prize was a trip to see Wicked in London last year!

Enrichment Opportunities



At St. Mary's, we give our pupils a wide range of different experiences which develop the children's understanding and spiritual connection to the world around them.

We are deeply rooted in our local community and work in partnership with the community on many events such as the Bridport Literary Festival, the Bridport Food Festival and through our Garden team.

Local trips can include walks to St. Mary's church, the library, the museum, the town hall, the Lyric Theatre, Arts centre, West Bay and to Colfox for productions as well as talks from visiting authors.

Trips further afield may include: a trip to a city such as London, Bristol or Exeter, an overnight residential experience in Year 6 and a visit to an alternative place of worship.

In Year 3 and 4, the children have weekly trips to Bridport Leisure Centre for swimming lessons.

Drop off and Pick Ups

The car park is for staff only. We have parking permits in the School Office for the football car park next door for use at picking up and dropping off times (8.30 – 9.00 am and 3.00 – 3.30 pm) only.

The School premises are a STRICTLY NO SMOKING AREA. It is school policy that no person is allowed to smoke on site. For health and safety reasons, dogs are not allowed on the school premises unless the dog is classed as an assistance dog.

| | |
|---------------------------------|---------------------|
| School gates open: | 8.40 am |
| Registration | 8.50 am |
| 1 st Morning Session | 8.55 am – 10.15 am |
| Morning Break | 10.15 am – 10.30 am |
| 2 nd Morning Session | 10.30 am – 12.00 pm |
| Lunchtime | 12.00 pm – 1.00 pm |
| Afternoon Session | 1.00 pm – 3.15 pm |
| Home time | 3.15 pm |

Attendance

The school gates are open from 8.40 am and children need to settle into class promptly ready to learn. Registers are taken at 8.50 am. Children will be marked in late up until 9.00 am. Children arriving after 9.00 am will be marked in as unauthorised unless you have notified the school beforehand to let us know e.g. car breakdown etc. If you arrive late, you will need to take your child to the office entrance where their arrival will be noted by the school office. They will then ensure your child is taken in to class.

What to do when your child is absent from school:

- Telephone the school office and leave a message on the attendance line on the first day of absence – before 9.00 am – to explain the reason why your child is away from school.
- If your child is away for more than one day, please keep the school informed during your child's absence.

We will telephone parents in the morning if we have not heard from you explaining the reason for your child's absence. It is essential that children and young people form good habits of regular attendance at school from an early age and that good attendance is maintained throughout their school career. The schools in the Bridport community are committed to working together to ensure that there is a consistent approach to school attendance. It is a legal requirement that all children should attend their educational provision and it is the responsibility of the family to ensure that their children attend school. Please speak to the school if you have concerns so that we can support you with these.





Breakfast and After School Clubs

We run a breakfast and after school club every day during term time from 7.45 am – 8.45 am and 3.15 – 5.15 pm (except Fridays when the after school club finishes at 4:15pm).

Children are welcome to attend even if it is a one-off situation where you need child-care. This can be booked via the Arbor app.

We also run different activity clubs from 3:15–4:15 throughout the week. You can access the latest list on our [school website](#).



Medical needs

Your admissions form will ask you to inform us of any medical needs. We ask you for an annual update to ensure we have the most up to date information to support your child.

The school are only able to administer prescribed medicines that need to be given four times a day. Parents will need to complete a medical form at the school office to enable our staff to dispense the medicine. Medicines must be given in the box that the pharmacy provides which is clearly labelled with your child's name and dose to be given. Medicines should be collected at the end of a course of treatment. It is the parent's responsibility to ensure that all medicines, inhalers etc. are in date and are taken home and replenished at the end of each term.

School Meals and Free School Meals

Our children are able to choose between hot meals or a cold platter (including a vegetarian option) choice prepared by Local Food Links. The food is cooked on site and uses local produce wherever possible. Menus are sent home on a regular basis for you to order your child's meals. These have to be ordered a week in advance.

Pupils in reception, year1 and 2 and those entitled to Free School Meals in any other year groups get a free nourishing meal.

If you think that you are entitled to Free School Meals, please come along to the office or go on the Dorset for You website where all of the information is available to you on how to claim for them. It is much easier now than it used to be – you often only have to give your National Insurance number and you can sometimes get an answer straight away as to whether you are entitled or not. You will also be entitled to financial support with school uniform and some subsidised school activities.





Uniform

We believe it is important for children to take a pride in their appearance and their school. We expect children to wear the school colours of red and black. Our uniform stockists are 'My Uniform' and they offer parents the chance to buy uniform on line. You are welcome to buy uniform from other places such as supermarkets provided it follows the guidelines below:

School uniform

White polo shirt
Red sweatshirt, cardigan or jumper (crew neck)
(Year 6 only wear black jumpers)
Black trousers, skirts or pinafore dresses. Black shorts and red checked dresses for summer.
Dark **flat** school shoes or boots (preferably black). Dark Sandals in the summer (must have backs and no Crocs)
Socks – neutral colours
Tights – grey, black or red.

P.E. uniform

Red t-shirt
Black shorts and/or tracksuit bottoms
Trainers suitable for inside and outside (different from school shoes where possible)
A black or red jumper or tracksuit top if the weather is cold.

Jewellery

Small stud type earrings **only** are permitted for children with pierced ears
Flat headbands only.

Small stud-type earrings are permitted for children with pierced ears.
Watches may be worn by older pupils who can tell the time.
Other items of jewellery and mobile phones are not allowed. Your child will need to hand them in to the school office for collection at the end of the day or by a responsible adult. Please ensure that your child brings a sun hat and suncream to school during sunny weather.

Safeguarding

St Mary's CE Primary School takes Safeguarding seriously and works closely with local authorities. Copies of our policies are available on the website or from the school office. All staff and volunteers are subject to Enhanced Disclosure check.

If you are concerned about the safety and wellbeing of any pupils please speak to our Designated Safeguarding Lead's – Katharine Anstey, Sarah-Jayne Samuel, Kate Barnett and Lucy Gerrard.

Occasionally there might be circumstances when we have to provide information or consult, other agencies such as Social Care and Health before we contact you. Our responsibility to do so is determined by Bournemouth, Dorset and Poole Inter-Agency Child Protection Procedures. For the majority of the time we will contact you if any concern has arisen, so that we can discuss the situation and offer support or signpost to support where appropriate.

